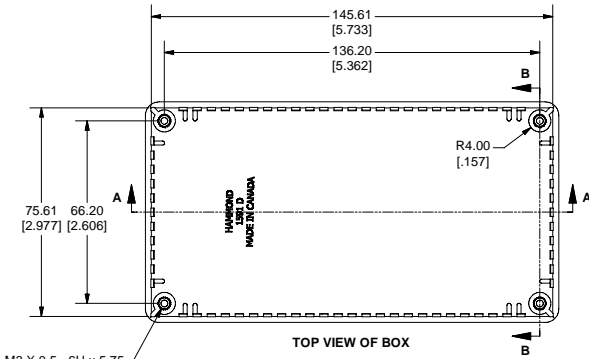
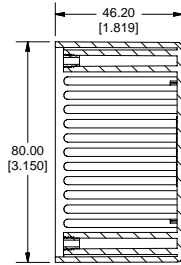


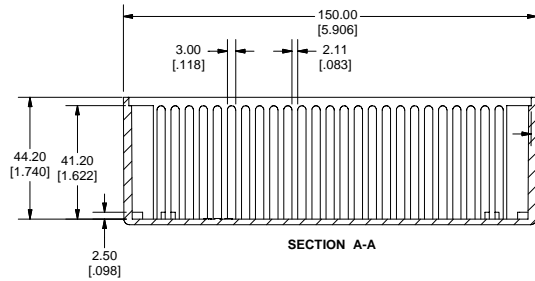
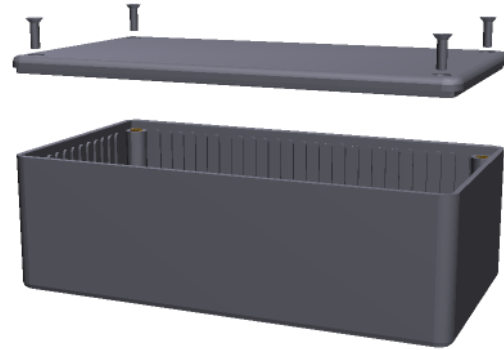
SIDE VIEW OF BOX



TOP VIEW OF BOX

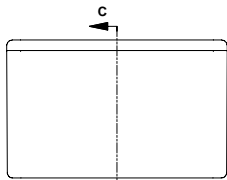


SECTION B-B

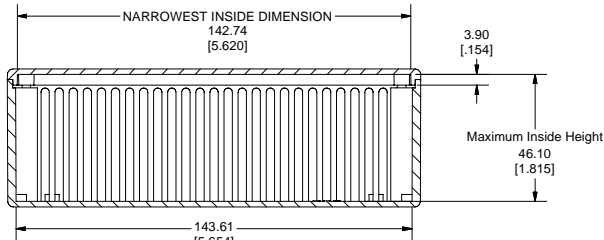


SECTION A-A

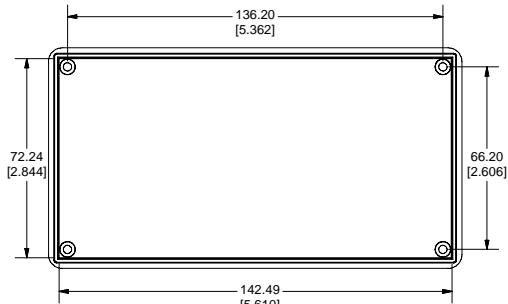
AVERAGE WALL THICKNESS  
2.00  
[.079]



END VIEW OF ASSEMBLY



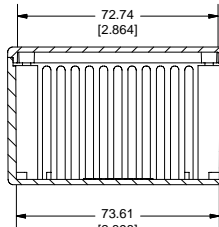
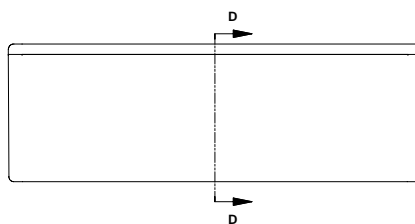
SECTION C-C



BOTTOM ON LID



SIDE OF LID



SECTION D-D

Note:  
Enclosures can be Factory Modified ( Milling, Drilling, Printing etc. )  
Contact Factory [mjm@hammondmfg.com](mailto:mjm@hammondmfg.com) for quotes  
Solid models of this enclosure available in STEP or IGES Format.

| PART NUMBERS                                     |  |                         |
|--|--|-------------------------|
| 1591D Enclosures                                 |  |                         |
| Material   | Colour   | Part Number             |
| FR ABS   | Beige  | 1591DBG                 |
|  | Black  | 1591DBK                 |
|  | Blue   | 1591DBU                 |
| UL94 - V0  | Grey   | 1591DGY                 |
|  | Black RAL 9011   | 1591DSBK                |
| GP ABS   | Grey RAL7035   | 1591DSGY                |
|  | Ice Blue   | 1591DTBU                |
| Translucent Polycarbonate                        | IR Red   | 1591DTRD                |
|  | Crystal Clear  | 1591DTCL                |
|  | Crystal Clear  | 1591DTCL                |
| Accessories                                      |  |                         |
|  | Description  | Part Number             |
| Universal Use                                    | PC Board Card Adapters                                       | See Accessories Section |
|  | Clear Lids - clear, flame retardant polycarbonate - Lid ONLY | 1591DC                  |
| FR ABS   | Replacement Screws, Flat Head Phillips                       | 1591MS100               |
|  | Nickel Plated Pkg of 100                                     | 1591MS100BK (Black)     |
| GP ABS   | Self Tapping Pkg of 100                                      | 1591TS100               |
|  |  | 1591TS100BK (Black)     |
| Recommended Torque on Fasteners (no lubrication) |  |                         |
| M3 - 0.5 x 10mm Screws                           |  | 30-40 cN*m              |
| #4 x 0.5 Screws                                  |  | 30-40 cN*m              |

