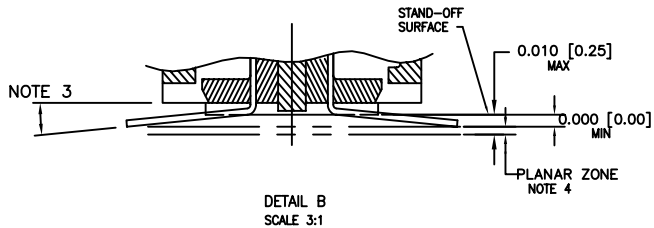
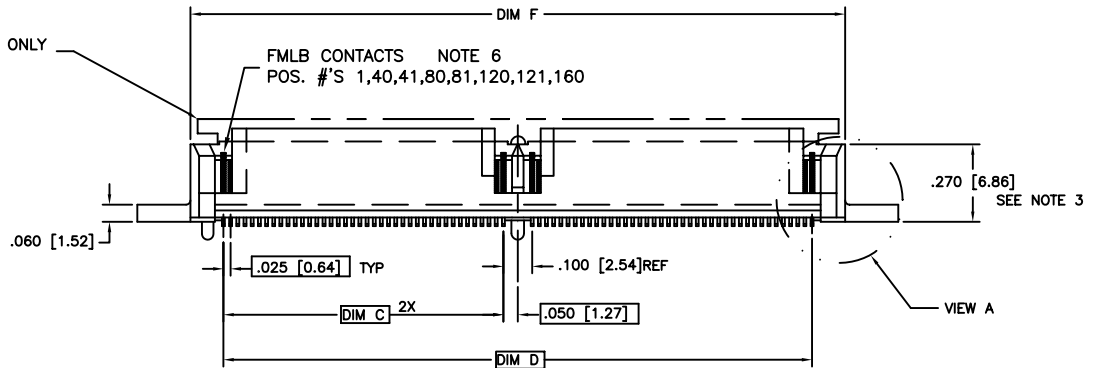
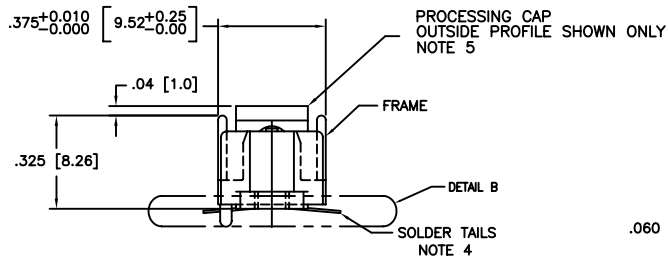
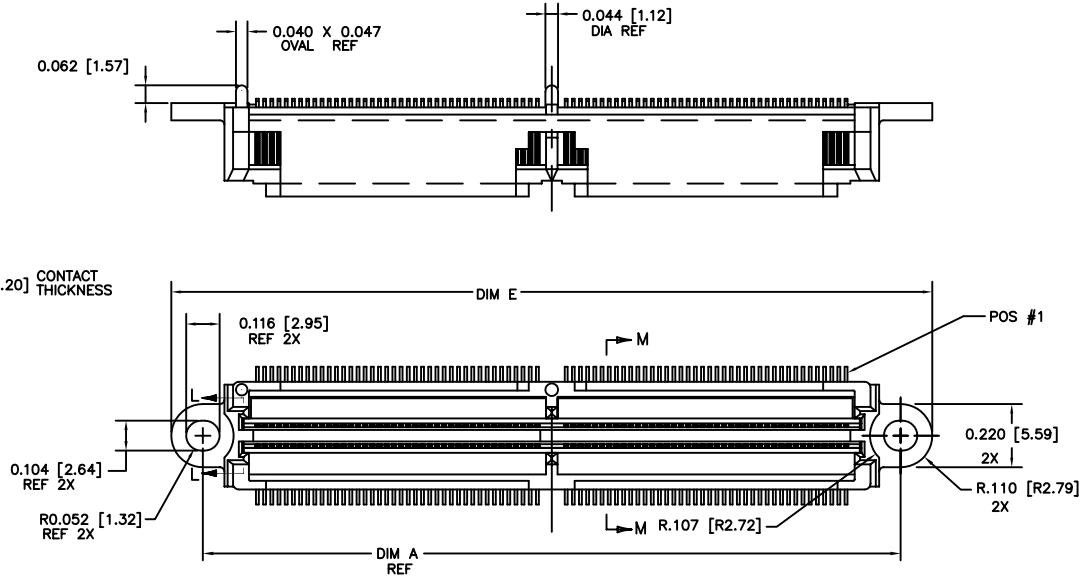
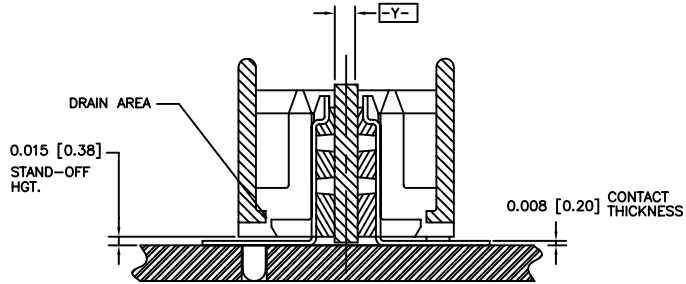
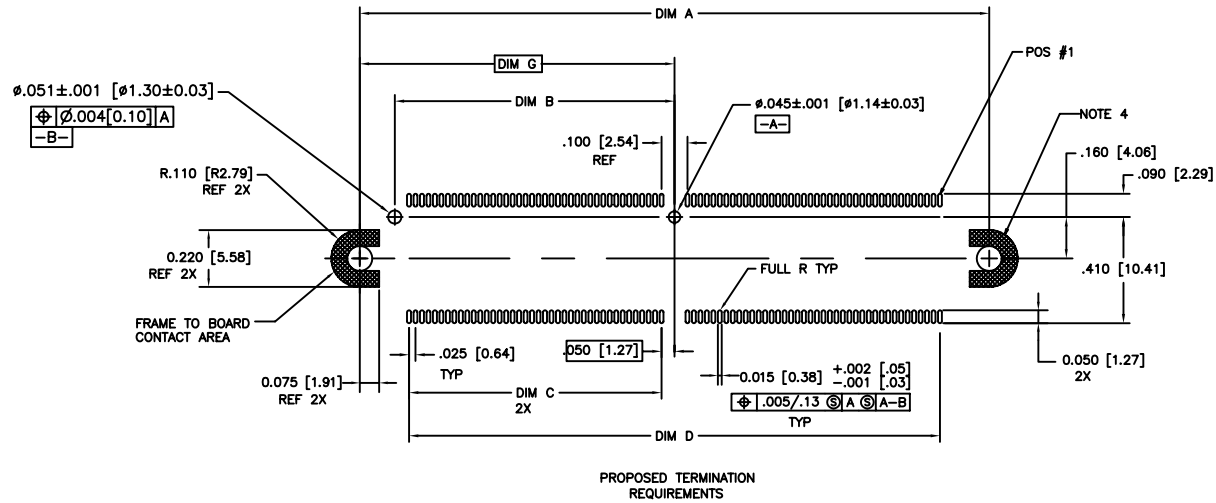


PRODUCT NUMBER  
SEE SHEET 2



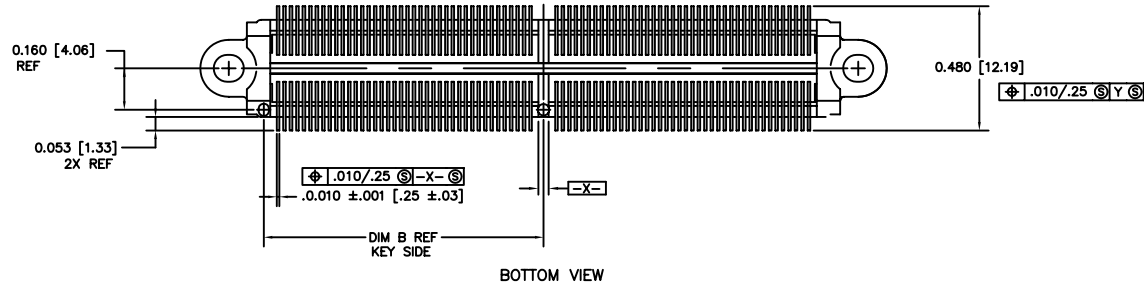
mat'l. code				surface ISO 1902	tolerance ISO 406 ISO 1101	projection INCH/MM	product family MICROPAX
ltr	ec'n no	dr	date	tolerances unless otherwise specified		scale 3:2	title .025/0.64 CL SMT PLUG DBL. MODULE, FMLB
A	v03-0849	GIP	8/04/03	angles	linear		dwg no 10021233
B	m05-0082	MHT	5/06/05				sheet 1 of 2 size A3
C	m06-0279	MNR	7/22/06	0°±2'			type Product Customer Drawing
D	m08-0251	MHT	9/08/08	dr	T. BRUNGARD	1/10/03	
				enr	M. GRAY	1/10/03	
				chr	M. GRAY	1/10/03	
				app	M. GRAY	1/10/03	
sheet index	revision sheet	D	D				
		1	2				

PRODUCT NUMBER	NO. OF CONTACTS	DIM A	DIM B	DIM C	DIM D	DIM E	DIM F	DIM G	CONTACT PLATING NOTE 2	PROCESSING CAP	PACKAGING
10021233-001	160	2.430/61.72	1.080/.27.43	.975/24.76	2.050/52.07	2.650/67.31	2.290/58.16	1.215/30.86	30 GXT	INSTALLED	TRAYS
10021233-001LF											



NOTES:

- MATERIALS:**  
DIELECTRIC: LCP  
CONTACTS: PHOS BRONZE  
FRAME: ZINC ALLOY #3
- PLATING:**  
SOLDER TAILS: 150 u"/3.81um Sn Pb  
FRAME: 100u"/2.54um NICKEL  
CONTACTS: 30u"/.76um GXT OVER 50u"/1.27um Ni  
**LEAD FREE OPTION:**  
SOLDER TAILS: 150 u"/3.81um Sn  
FRAME: 100u"/2.54um NICKEL  
CONTACTS: 30u"/.76um GXT OVER 50u"/1.27um Ni
- WHEN CONNECTOR IS MATED WITH OPPOSITE HALF, THE PARALLEL BD. TO BD. HGT. IS .47 ±.01. (APPLYS TO VERT. THRU & SURFACE MT. STYLES)
- WHEN MEASURED IN THE UNSTRAINED STATE, THE BOTTOM EDGE OF ALL SOLDER TAIL TIPS SHALL LIE IN A PLANAR ZONE AS DESCRIBED IN DETAIL B. THE ZONE IS DEFINED BY A PLANE ESTABLISHED ACROSS THE BASE OF THE TWO MOUNT LUG/STAND-OFFS.
- DO NOT REMOVE PROCESSING CAP UNTIL SOLDERING IS COMPLETED.
- MINIMUM DIMENSION BETWEEN LONG AND SHORT FMLB CONTACTS IS .022 [0.55].
- PART NUMBER WITH LF SUFFIX AT THE END IS LEAD FREE.
- THE HOUSING WILL WITHSTAND EXPOSURE TO 260°C PEAK TEMPERATURE FOR 20 SECONDS IN A CONVECTION, INFRA-RED OR VAPOR PHASE REFLOW OVEN.
- IF "LF" P/N THE PRODUCT MEETS EUROPEAN UNION DIRECTIVES AND OTHER COUNTRY REGULATION AS DESCRIBED IN GS-22-008.
- SEE BUS-20-084 (SET-UP APPLICATION SPEC.) FOR REFERENCE



mat'l. code		surface ISO 1902		tolerance ISO 406 ISO 1101		projection		product family	
ltr		ecn no		dr		date		MICROPAX	
D		angles		linear		INCH/MM		title	
		0°±2°		.XXX±.01/XXX±0.3 .XXX±.005/XXX±0.13 .XXX±.0020/XXX±0.051		scale 3:2		.025/0.64 CL SMT PLUG DBL. MODULE, FMLB	
		dr		engr		chr		dwg no	
		T. BRUNGARD		M. GRAY		M. GRAY		sheet 2 of 2 size	
		1/10/03		1/10/03		1/10/03		10021233 A3	
		appd		M. GRAY		1/10/03		type	
		sheet		revision				Product Customer Drawing	
		index		sheet					