



ENTERPRISE CLASS  
WI-FI TO CELLULAR  
ROUTER



# DIGI TRANSPORT® WR44

Enterprise class, commercial grade Wi-Fi to cellular router with flexible interface options ideal for distributed branch applications

The Digi TransPort WR44 cellular router is an all-in-one branch networking solution with true enterprise-class routing, security and firewall. This multifunction cellular router features a flexible design with integrated Wi-Fi access point, USB, serial, 4-port Ethernet switch, with an optional serial expansion card.

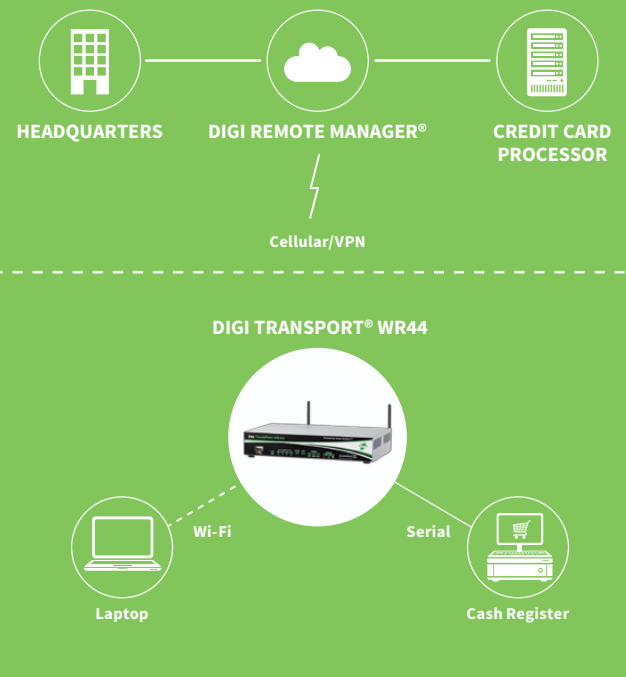
Digi TransPort WR44 is ideal for retail and utility applications. Flexible power options include 9–36 VDC barrel or Molex connectors for direct integration into DC power supplies. Digi Remote Manager® provides easy setup, configuration and maintenance of large installations of Digi TransPort devices.

The Digi TransPort family offers an advanced routing, security and firewall feature set including stateful inspection firewall and integrated VPN. Enterprise-class protocols incorporate BGP, OSPF and VRRP+, a patented technology built upon the popular VRRP failover standard providing true auto sensing, auto failure and auto recovery of any line drop.

## BENEFITS

- Enterprise class cellular routers with advanced dynamic routing, security and firewall features
- High speed cellular interfaces: HSPA+ and 4G LTE
- Optional integrated 802.11 b/g/n; a/n Wi-Fi access point and 4-port Ethernet switch
- Flexible interfaces including serial with DC power options
- Powerful integrated end user programming
- Digi Remote Manager software for easy setup, configuration, and maintenance

## APPLICATION EXAMPLE



## RELATED PRODUCTS



## SPECIFICATIONS

## Digi TransPort® WR44

## WIRELESS INTERFACES

## WWAN\*\*

|                                 |   |
|---------------------------------|---|
| <b>LTE - EMEA (L1)</b>          | 800/850/900/1800/1900/2100/2600 MHz; 3G fall back to 850/900/1900/2100MHz and 2G fall back to 850/900/1800/1900 MHz; Transfer rate (max): 50 Mbps Up, 100 Mbps Down   |
| <b>LTE 450 - EMEA/APAC (M2)</b> | Cellient MPL200, LTE: 450/800/900/1800/2600MHz; fallback to HSPA and 2G   |
| <b>LTE - NORTH AMERICA (L5)</b> | Software defined multi-carrier (Verizon, AT&T, and Sprint) 700/850/1700(AWS)/1900 MHz; 2G/3G GSM fall back to 850/900/1700AWS/1800/1900/2100 MHz; 2G/3G CDMA fall back to 800/1900 MHz; Transfer rate (max): 50 Mbps up, 100 Mbps down, Verizon Private Network, DMNR and PNTM Approved |
| <b>HSPA+ (U9)</b>               | 850/900/1700 (AWS)/1900/2100 MHz; Transfer rate (max): 5.76 Mbps Up, 21 Mbps Down   |
| <b>CONNECTOR</b>                | Ux, Lx variants: 2 x 50 Ω SMA (Center pin: female); Dx, variants: 1 x 50 Ω SMA (Center pin: female)   |
| <b>SIM SLOTS</b>                | 2, Mini-SIM (2FF)   |
| <b>SIM SECURITY</b>             | SIM slot cover plate optional   |

## WI-FI\*

|                            |  |
|----------------------------|--|
| <b>STANDARD</b>            | 802.11 b/g/n; a/n  |
| <b>MODES</b>               | Access point, Client and support for multiple SSID   |
| <b>TRANSMIT POWER</b>      | 20 dBm + 1.0/-1.5 dBm  |
| <b>RECEIVE SENSITIVITY</b> | 54 Mbps / <-72 dBm and 11 Mbps / -90 dBm   |
| <b>SECURITY</b>            | Open or shared key authentication; WEP (64- and 128-bit) encryption; WPA/WPA2 with RADIUS (WPA Enterprise and pre-shared keys) |
| <b>CONNECTORS</b>          | 2 x 50 Ω RP-SMA (Center pin: male)   |

## WIRED INTERFACES

## SERIAL

|                            |   |
|----------------------------|---|
| <b>PORTS</b>               | 1; Expansion cards available to increase serial ports |
| <b>STANDARD</b>            | RS-232; Expansion cards available in RS-422/485       |
| <b>ASYNC/SYNC</b>          | Async   |
| <b>DTE/DCE</b>             | DCE   |
| <b>SIGNAL SUPPORT</b>      | TXD, RXD, RTS, CTS, DTR, DCD, DSR, RI                 |
| <b>FLOW CONTROL</b>        | Software (XON/XOFF), Hardware supported               |
| <b>COM PORT REDIRECTOR</b> | RealPort®   |
| <b>CONNECTOR</b>           | DB-9 female   |

## ETHERNET

|                                 |   |
|---------------------------------|---|
| <b>PORTS</b>                    | 4   |
| <b>STANDARD/PHYSICAL LAYER</b>  | IEEE 802.3; 10/100 Base-T                         |
| <b>DATA RATE/MODE/INTERFACE</b> | 10/100 Mbit/s; Full or Half duplex; Auto MDI/MDIX |
| <b>CONNECTOR</b>                | RJ-45   |

## USB

|                  |                    |
|------------------|--------------------|
| <b>PORTS</b>     | 1                  |
| <b>STANDARD</b>  | USB 2.0            |
| <b>SIGNALING</b> | Full- or low-speed |
| <b>CONNECTOR</b> | Type A             |

## SOFTWARE

|   |   |
|---|---|
| <b>REMOTE MANAGEMENT</b>                | Digi Remote Manager® (cloud based); SNMP v1/v2c/v3 (user installed/managed)                             |
| <b>LOCAL MANAGEMENT</b>                 | Web Interface (HTTP/HTTPS); CLI (Telnet, SSH, SMS, Serial port)   |
| <b>MANAGEMENT/TROUBLESHOOTING TOOLS</b> | FTP, SFTP, SCP, Protocol Analyzer with PCAP for Wireshark, Event Logging with Syslog and SMTP, NTP/SNTP |
| <b>PROGRAMMING TOOLS/ENVIRONMENTS</b>   | Python, DIA, Digi ESP™  |
| <b>MEMORY</b>                           | 128 MB NAND Flash/64 MB DDR2 SDRAM  |

\* Optional hardware. Lead time and/or minimum order quantity may apply. Contact Digi Sales for details.

\*\* Transfer rates are network operator dependent

## SPECIFICATIONS

## Digi TransPort® WR44

| POWER                        |   |
|------------------------------|---|
| INPUT                        | 9 – 36 VDC  |
| CONSUMPTION                  | 15W max, 8.5W typical   |
| CONNECTOR                    | Locking barrel and 4-pin terminal block (2 pins are used for power; the other 2 pins are used for I/O). |
| DC POWER CORD*               | Locking barrel to bare wire or 4-pin connector to bare wire   |
| DC POWER SUPPLY*             | 100-240 VAC 50/60 Hz; Option of standard temperature or extended temperature                            |
| PHYSICAL                     |   |
| DIMENSIONS (L X W X H)       | 5.7 in x 8.3 in x 1.6 in (145 mm x 210 mm x 40 mm)  |
| WEIGHT                       | 1.98 lb (0.9 kg)  |
| STATUS LEDS                  | Power, LAN, Wi-Fi, Serial, WWAN (Link, Act, SIM), Signal strength                                       |
| MATERIAL/RATING****          | Industrial (Metal)/ IP30  |
| MOUNTING                     | Brackets for wall mount & DIN rail sold separately  |
| ENVIRONMENTAL                |   |
| OPERATING TEMPERATURE ***    | 0° C to +40° C  |
| STORAGE TEMPERATURE          | -40° C to +85° C  |
| RELATIVE HUMIDITY            | 0% to 95% (non-condensing) @ 25° C  |
| ETHERNET ISOLATION           | 1.5 kV RMS  |
| SERIAL PORT PROTECTION (ESD) | 15 kV   |
| HAZARDOUS (CLASS 1 DIV 2)    | N/A   |
| CONFORMAL COATING            | N/A   |
| APPROVALS                    |   |
| GSM/HSPA/LTE                 | PTCRB, NAPRD.03, GCF-CC, R&TTE, EN 301 511  |
| CELLULAR CARRIERS            | Certified by most major carriers.   |
| SAFETY                       | UL 60950, CSA 22.2 No. 60950, EN60950   |
| EMISSIONS/IMMUNITY           | CE, FCC Part 15 Class B, AS/NZS CISPR 22, EN55024, EN55022 Class B                                      |
| WARRANTY                     |   |
| PRODUCT WARRANTY             | 5 years   |

## ENTERPRISE SOFTWARE

## DESCRIPTION

|                            |   |
|----------------------------|---|
| PROTOCOLS                  | HTTP, HTTPS, FTP, SFTP, SSL, SMTP, SNMP (v1/v2c/v3), SSH, Telnet and CLI for web management; remote management via Digi Remote Manager; SMS management, protocol analyzer, ability to capture PCAP for use with Wireshark; DynDNS; Dynamic DNS client compatible with BIND9/No-IP/DynDNS  |
| SECURITY/VPN               | Stateful inspection firewall with scripting, address and port translation; VPN: IPSec with IKEv1, IKEv2, NAT Traversal; SSL, SSLv2, FIPS 197, Open VPN client and server; PPTP, L2TP; VPN Tunnels included: 5; Maximum VPN Tunnels available: 200; Cryptology: SHA-1, MD5, RSA; Encryption: DES, 3DES and AES up to 256-bit; Authentication: RADIUS, TACACS+, SCEP for X.509 certificates; Content Filtering (via 3rd party) ; MAC Address Filtering; VLAN support; Ethernet Port Isolation |
| ROUTING/FAILOVER           | IP pass-through ; NAT, NATP with IP Port Forwarding; Ethernet Bridging; GRE; Multicast Routing; Routing Protocols: PPP, PPPoE, RIP (v1, v2) OSPF, SRI, BGP, iGMP routing (multicast); RSTP (Rapid Spanning Tree Protocol); IP Failover: VRRP, VRRP+TM; Automatic failover/fail-back to second GSM network/Standby APN   |
| OTHER PROTOCOLS            | DHCP; Dynamic DNS client compatible with BIND9/No-IP/DynDNS; QoS via TOS/DSCP/WRED  |
| SPECIALTY/LEGACY PROTOCOLS | RealPort®; Modbus UDP/TCP to serial; X.25 including XOT, SNA/IP, TPAD and PAD; Protocol switch*; Ethernet, serial I/O and DNP3 and Modbus bridging for connecting diverse field assets  |

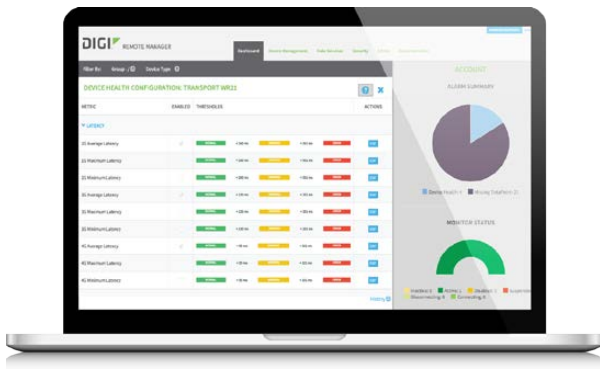
\* Optional hardware. Lead time and/or minimum order quantity may apply. Contact Digi Sales for details.

\*\* Transfer rates are network operator dependent

\*\*\* Reduced cellular performance may occur outside of -20° C to +60° C. Standard temperature power supplies may reduce temperature range.

\*\*\*\* The enclosure rating is self-declared and has not been formally verified by an independent lab.

# DIGI REMOTE MANAGER®



## CAPABILITIES

- Centralized management of remote devices over 3G/4G LTE
- Define standard configurations and automatically monitor individual devices for PCI security compliance
- Report and alert on performance statistics, including connection history, signal quality, latency, data usage and packet loss
- No servers or applications to operate and maintain
- Complete tasks for your entire device network in minutes
- Edit configurations and update firmware for your individual devices or groups
- Monitor the status and location of your remote device via a web browser
- Active or deactivate cellular lines and monitor data to ensure you never incur overage charges

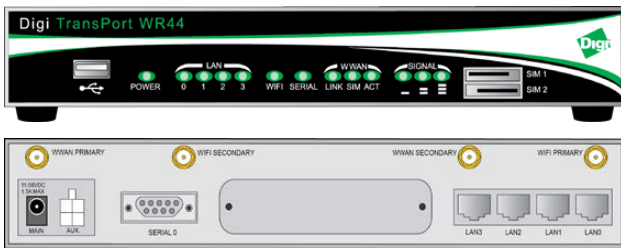
## INFRASTRUCTURE

- Hosted in multiple commercial-grade SAS 70 certified facilities in North America and Europe
- Superior availability, operating to 99.9% or greater
- Open APIs available to support application development

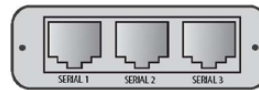
## SECURITY

- Certified SSAE-16 and ISO27001 facilities
- Member of the Cloud Security Alliance
- Over 175 Security Controls in place to protect your data
- Enables compliance with security frameworks like PCI, HIPAA, NIST and more
- Earned SkyHigh's Cloud Trust Program highest ranking of Enterprise-Ready

## PRODUCT IMAGES



## CONNECTOR



### ASYNCHRONOUS SERIAL PORTS (A3)

3x asynchronous RS-232 serial ports

| PART NUMBERS     | DESCRIPTION   |
|------------------|---|
| WR44-L100-CE1-SW | Digi TransPort WR44 - Cellular (4G LTE International), No Wi-Fi, Antennas & Power Supply Included (International)   |
| WR44-L100-NE1-SW | Digi TransPort WR44 - Cellular (4G LTE International), Wi-Fi, Antennas & Power Supply Included (International)  |
| WR44-L500-CE1-SU | Digi TransPort WR44 - Cellular (4G LTE Multi-Carrier Software Defined, North America), No Wi-Fi, Antennas & Power Supply Included                         |
| WR44-L500-NE1-SU | Digi TransPort WR44 - Cellular (4G LTE Multi-Carrier Software Defined, North America), Wi-Fi, Antennas & Power Supply Included                            |
| WR44-L5A3-CE1-SU | Digi TransPort WR44 - Cellular (4G LTE Multi-Carrier Software Defined, North America), No Wi-Fi, Async (3 RS-232 Ports), Antennas & Power Supply Included |
| WR44-U900-CE1-SW | Digi TransPort WR44 - Cellular (HSPA+ Global), No Wi-Fi, Antennas & Power Supply Included (International)   |
| WR44-U900-NE1-SW | Digi TransPort WR44 - Cellular (HSPA+ Global), Wi-Fi, Antennas & Power Supply Included (International)  |

DIGI SERVICE AND SUPPORT / You can purchase with confidence knowing that Digi is always available to serve you with expert technical support and our industry leading warranty. For detailed information visit [www.digi.com/support](http://www.digi.com/support).

© 1996-2017 Digi International Inc. All rights reserved.  
All trademarks are the property of their respective owners.

91001557  
E8/317

DIGI INTERNATIONAL WORLDWIDE HQ  
877-912-3444 / 952-912-3444 / [www.digi.com](http://www.digi.com)

DIGI INTERNATIONAL FRANCE  
+33-1-55-61-98-98 / [www.digi.fr](http://www.digi.fr)

DIGI INTERNATIONAL JAPAN  
+81-3-5428-0261 / [www.digi-intl.co.jp](http://www.digi-intl.co.jp)

DIGI INTERNATIONAL SINGAPORE  
+65-6213-5380

DIGI INTERNATIONAL CHINA  
+86-21-50492199 / [www.digi.com.cn](http://www.digi.com.cn)

