


R438B/29367 FISH TAPE SWIVEL TIP

	⚠ WARNING
	Wear eye protection when using or servicing this tool. Failure to wear eye protection can result in serious eye injury from flying debris or from the end of the fish tape.

	⚠ WARNING
	Hot surfaces can cause burns. Do not touch the tape, the end of the torch, or any other heated surfaces. Failure to observe this warning can result in severe injury.

⚠ CAUTION
An improperly treated tape can break. Heat the tape completely and allow it to air cool. Do not quench. Failure to observe this precaution can result in injury or property damage.


Preparation

- Tape without a ball tip: Cut off the loop at the end of the tape.
- Tape with a ball tip: Unscrew the male half of the ball tip from the female half. Slide the female half away from the crimped end of the tape. Cut off the crimp. Remove the female half from the tape.

999 2775.6 © 2001 Greenlee Textron Printed in the U.S.A. IM 1339 REV 1 9/01

R438B/29367 FISH TAPE SWIVEL TIP

	⚠ WARNING
	Wear eye protection when using or servicing this tool. Failure to wear eye protection can result in serious eye injury from flying debris or from the end of the fish tape.

	⚠ WARNING
	Hot surfaces can cause burns. Do not touch the tape, the end of the torch, or any other heated surfaces. Failure to observe this warning can result in severe injury.

⚠ CAUTION
An improperly treated tape can break. Heat the tape completely and allow it to air cool. Do not quench. Failure to observe this precaution can result in injury or property damage.

Preparation

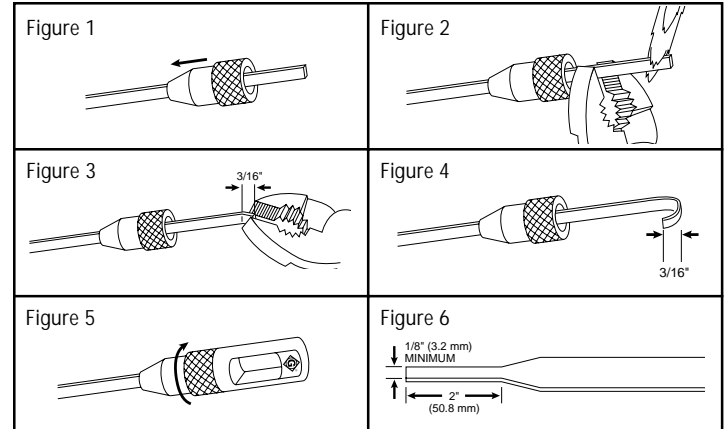
- Tape without a ball tip: Cut off the loop at the end of the tape.
- Tape with a ball tip: Unscrew the male half of the ball tip from the female half. Slide the female half away from the crimped end of the tape. Cut off the crimp. Remove the female half from the tape.

999 2775.6 © 2001 Greenlee Textron Printed in the U.S.A. IM 1339 REV 1 9/01

Replacement

1. Slide the female half of the ball tip, narrow end first, onto the tape. See Figure 1.
2. Grip the tape with a pair of insulated pliers. Use a torch to heat the tape until it is a dull red color. See Figure 2.
3. Use another pair of insulated pliers to make a 3/16" (4.8 mm) crimp in the tape. See Figure 3. Crimp the tape back to 180°. See Figure 4.
4. Allow the tape to air cool completely. The tape should be folded completely back on itself.
5. Reheat the tape and allow it to air cool completely. Do not quench.
6. Thread the male half of the ball tip into the female half. See Figure 4. Tighten with pliers.

Note: If the ball tip does not rotate freely, cut off the tip and grind the tape as shown in Figure 5. Form a new crimp as described in Steps 1-6.



GREENLEE TEXTRON

Greenlee Textron / Subsidiary of Textron Inc.

4455 Boeing Drive, Rockford, IL 61109-2988 USA

Customer Service (International): 815/397-7070 • Fax: 815/397-1391

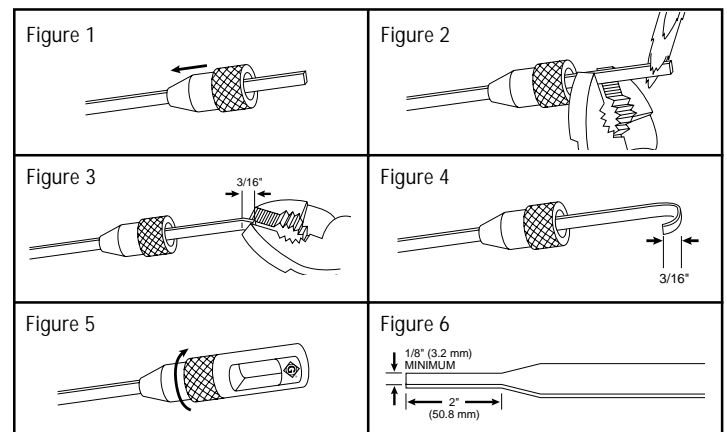
Customer Service (North America): 800/435-0786 • Fax: 800/451-2632, 815/397-1865

Canada Fax: 800/524-2853

Replacement

1. Slide the female half of the ball tip, narrow end first, onto the tape. See Figure 1.
2. Grip the tape with a pair of insulated pliers. Use a torch to heat the tape until it is a dull red color. See Figure 2.
3. Use another pair of insulated pliers to make a 3/16" (4.8 mm) crimp in the tape. See Figure 3. Crimp the tape back to 180°. See Figure 4.
4. Allow the tape to air cool completely. The tape should be folded completely back on itself.
5. Reheat the tape and allow it to air cool completely. Do not quench.
6. Thread the male half of the ball tip into the female half. See Figure 4. Tighten with pliers.

Note: If the ball tip does not rotate freely, cut off the tip and grind the tape as shown in Figure 5. Form a new crimp as described in Steps 1-6.



GREENLEE TEXTRON

Greenlee Textron / Subsidiary of Textron Inc.

4455 Boeing Drive, Rockford, IL 61109-2988 USA


Customer Service (International): 815/397-7070 • Fax: 815/397-9247

Customer Service (North America): 800/435-0786 • Fax: 800/451-2632, 815/397-1865

Canada Fax: 800/524-2853

R438B/29367 FISH TAPE SWIVEL TIP

	⚠ WARNING
	<p>Wear eye protection when using or servicing this tool. Failure to wear eye protection can result in serious eye injury from flying debris or from the end of the fish tape.</p>

	⚠ WARNING
	<p>Hot surfaces can cause burns. Do not touch the tape, the end of the torch, or any other heated surfaces. Failure to observe this warning can result in severe injury.</p>

⚠ CAUTION
<p>An improperly treated tape can break. Heat the tape completely and allow it to air cool. Do not quench. Failure to observe this precaution can result in injury or property damage.</p>


Preparation

- Tape without a ball tip: Cut off the loop at the end of the tape.
- Tape with a ball tip: Unscrew the male half of the ball tip from the female half. Slide the female half away from the crimped end of the tape. Cut off the crimp. Remove the female half from the tape.

999 2775.6 © 2001 Greenlee Textron Printed in the U.S.A. IM 1339 REV 1 9/01

R438B/29367 FISH TAPE SWIVEL TIP

	⚠ WARNING
	<p>Wear eye protection when using or servicing this tool. Failure to wear eye protection can result in serious eye injury from flying debris or from the end of the fish tape.</p>

	⚠ WARNING
	<p>Hot surfaces can cause burns. Do not touch the tape, the end of the torch, or any other heated surfaces. Failure to observe this warning can result in severe injury.</p>

⚠ CAUTION
<p>An improperly treated tape can break. Heat the tape completely and allow it to air cool. Do not quench. Failure to observe this precaution can result in injury or property damage.</p>

Preparation

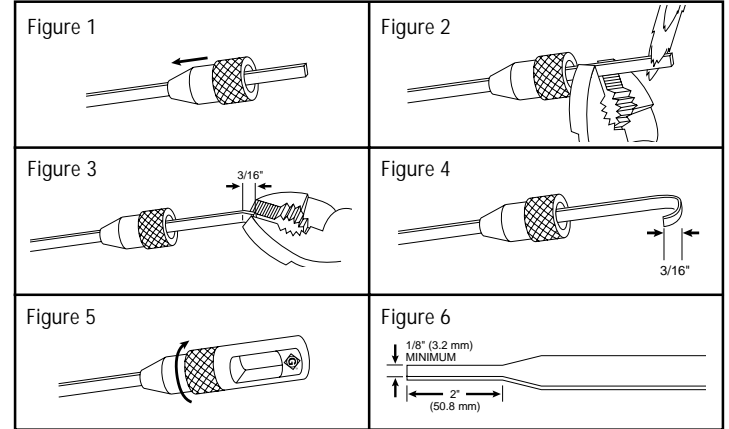
- Tape without a ball tip: Cut off the loop at the end of the tape.
- Tape with a ball tip: Unscrew the male half of the ball tip from the female half. Slide the female half away from the crimped end of the tape. Cut off the crimp. Remove the female half from the tape.

999 2775.6 © 2001 Greenlee Textron Printed in the U.S.A. IM 1339 REV 1 9/01

Replacement

1. Slide the female half of the ball tip, narrow end first, onto the tape. See Figure 1.
2. Grip the tape with a pair of insulated pliers. Use a torch to heat the tape until it is a dull red color. See Figure 2.
3. Use another pair of insulated pliers to make a 3/16" (4.8 mm) crimp in the tape. See Figure 3. Crimp the tape back to 180°. See Figure 4.
4. Allow the tape to air cool completely. The tape should be folded completely back on itself.
5. Reheat the tape and allow it to air cool completely. Do not quench.
6. Thread the male half of the ball tip into the female half. See Figure 4. Tighten with pliers.

Note: If the ball tip does not rotate freely, cut off the tip and grind the tape as shown in Figure 5. Form a new crimp as described in Steps 1-6.



GREENLEE TEXTRON

Greenlee Textron / Subsidiary of Textron Inc.

4455 Boeing Drive, Rockford, IL 61109-2988 USA

Customer Service (International): 815/397-7070 • Fax: 815/397-1391

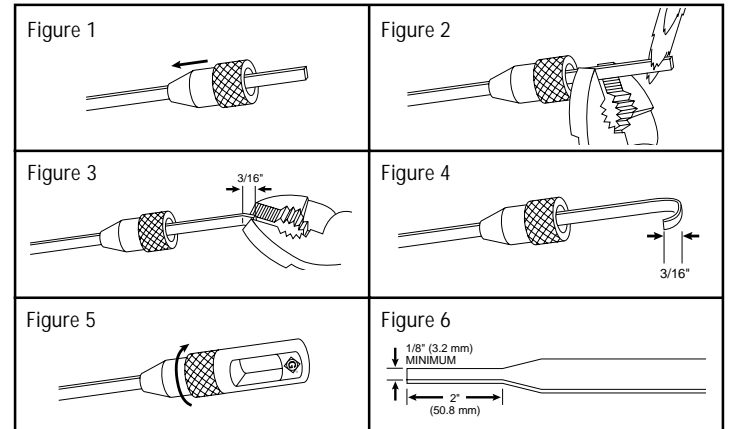
Customer Service (North America): 800/435-0786 • Fax: 800/451-2632, 815/397-1865

Canada Fax: 800/524-2853

Replacement

1. Slide the female half of the ball tip, narrow end first, onto the tape. See Figure 1.
2. Grip the tape with a pair of insulated pliers. Use a torch to heat the tape until it is a dull red color. See Figure 2.
3. Use another pair of insulated pliers to make a 3/16" (4.8 mm) crimp in the tape. See Figure 3. Crimp the tape back to 180°. See Figure 4.
4. Allow the tape to air cool completely. The tape should be folded completely back on itself.
5. Reheat the tape and allow it to air cool completely. Do not quench.
6. Thread the male half of the ball tip into the female half. See Figure 4. Tighten with pliers.

Note: If the ball tip does not rotate freely, cut off the tip and grind the tape as shown in Figure 5. Form a new crimp as described in Steps 1-6.



GREENLEE TEXTRON

Greenlee Textron / Subsidiary of Textron Inc.

4455 Boeing Drive, Rockford, IL 61109-2988 USA

Customer Service (International): 815/397-7070 • Fax: 815/397-9247

Customer Service (North America): 800/435-0786 • Fax: 800/451-2632, 815/397-1865

Canada Fax: 800/524-2853