

COUNT	DESCRIPTION OF REVISIONS	BY	CHKD	DATE	COUNT	DESCRIPTION OF REVISIONS	BY	CHKD	DATE

FIG. 1
RECOMMENDED PCB PATTERN
(THROUGH HOLE)

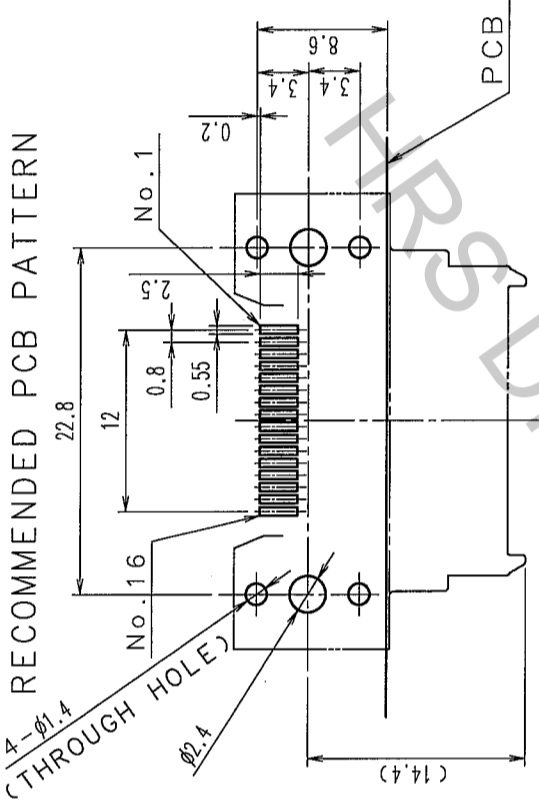
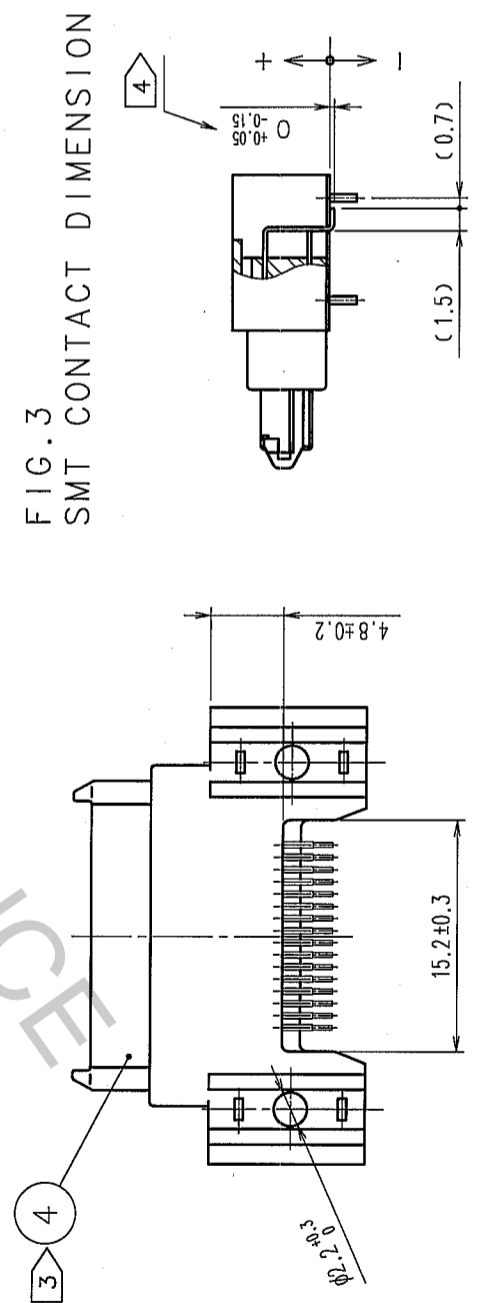
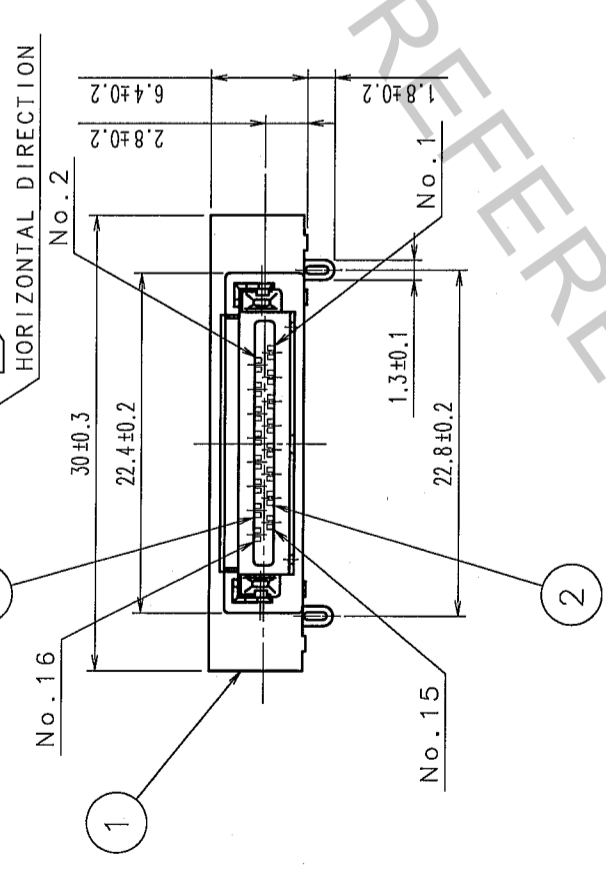
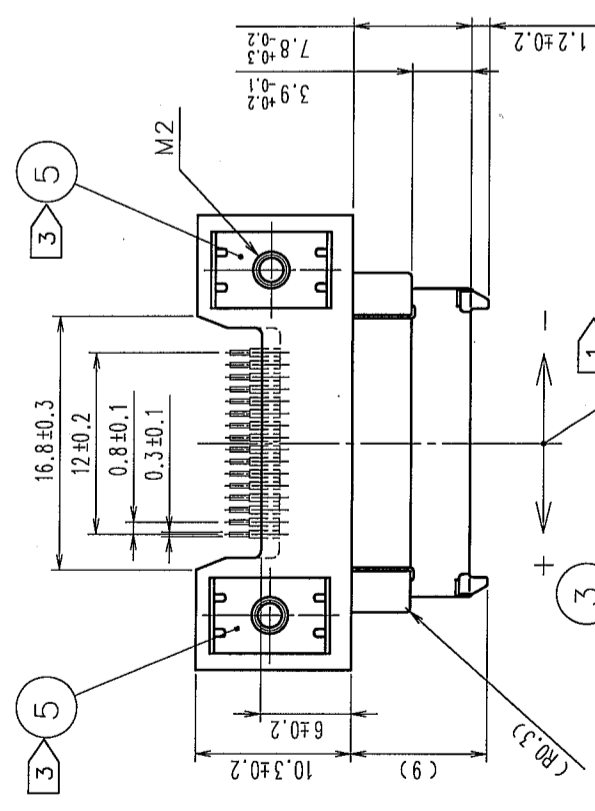
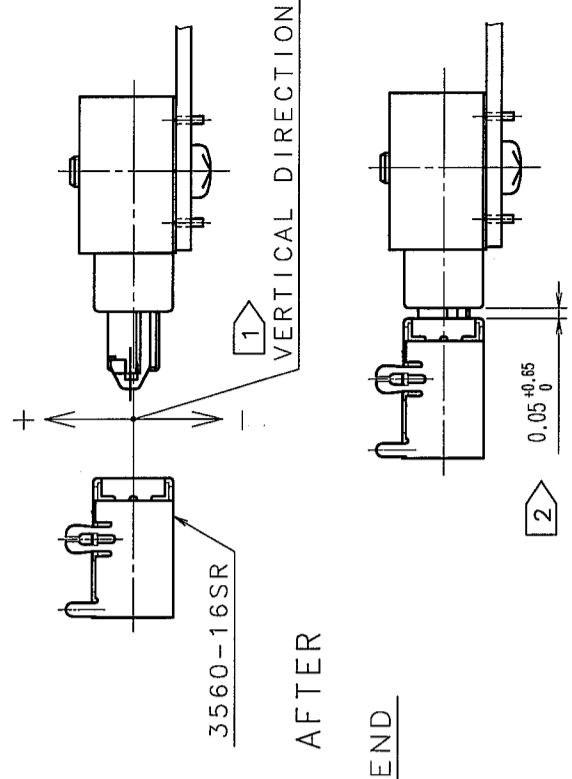


FIG. 2: BEFORE AND AFTER MATING



NOTE ① FLOATING DISTANCE IN HORIZONTAL AND VERTICAL DIRECTIONS IS ± 0.7 . (APPLICABLE CONNECTOR: 3560-16S OR 3560-16SR)
 ② GAP BETWEEN MATED PLUG AND RECEPTACLE TO BE $0.05^{+0.05}_0$.
 ③ REFERENCE NO. ④ AND ⑤ ARE CONNECTED INSIDE THE CONNECTOR. (GROUND IS TO BE CONNECTED TO PCB BY REFERENCE NO. ⑤).
 ④ SMT DIMENSION OF CONTACTS (REFERENCE NO. ② AND ③) SHOWN IN FIG. 3.

NO.	MATERIAL	FINISH, REMARKS	NO.	MATERIAL	FINISH, REMARKS
3	COPPEY ALLOY	SELECTIVE GOLD PLATING + SELECTIVE TIN COPPER PLATING	6	PVC	
2	COPPEY ALLOY	SELECTIVE GOLD PLATING + SELECTIVE TIN COPPER PLATING	5	COPPEY ALLOY	TIN PLATING
1	POLYAMIDE	BLACK UL94V-0	4	STAINLESS STEEL	

CODE NO. (COLD)	DRAWN	DESIGNED	CHECKED	APPROVED	RELEASED
	Y. Sato 05.10.13	T. Yamaguchi 05.10.13	Y. Enami 05.10.13	H. Murai 05.10.13	

DRAWING NO.	EDC3-120892-02	PART NO.	3560-16P-PG(50)
SCALE	2:1	CODE NO.	CL235-0016-0-50
UNITS	mm		

