

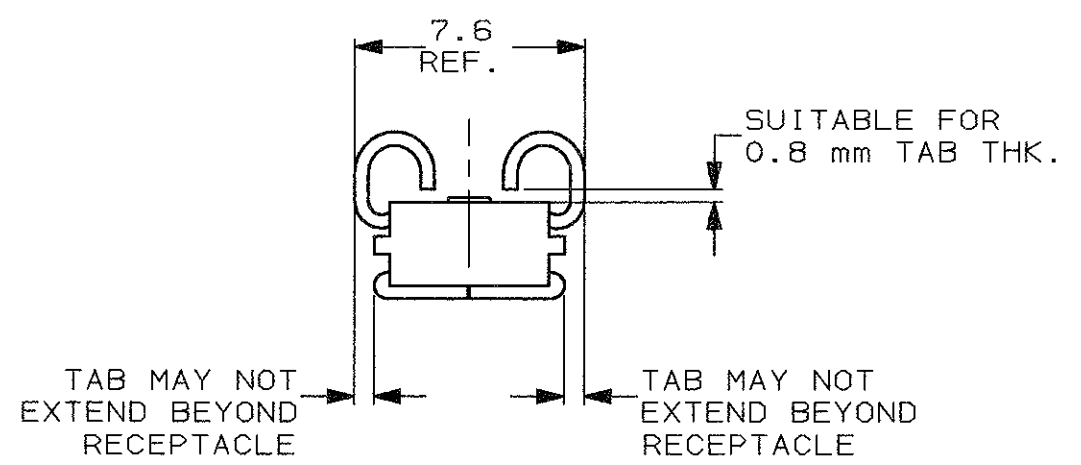
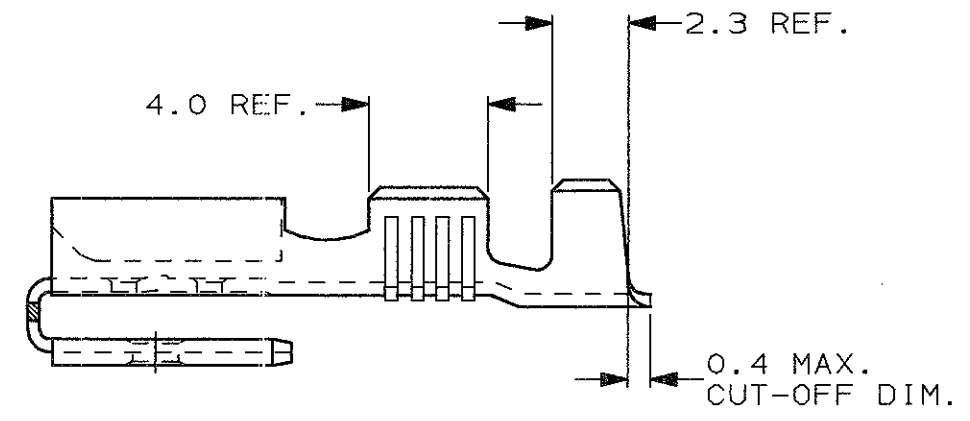
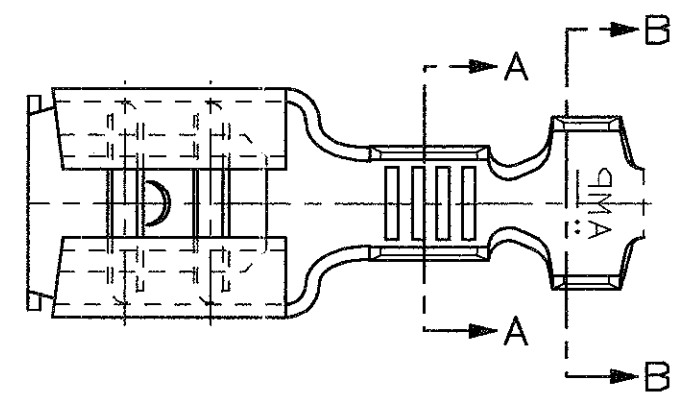
SCALA NON IMPEGNATIVA  
(DO NOT SCALE)  
DIMENSIONI IN mm  
(DIMENSIONS IN mm)

**METRIC**



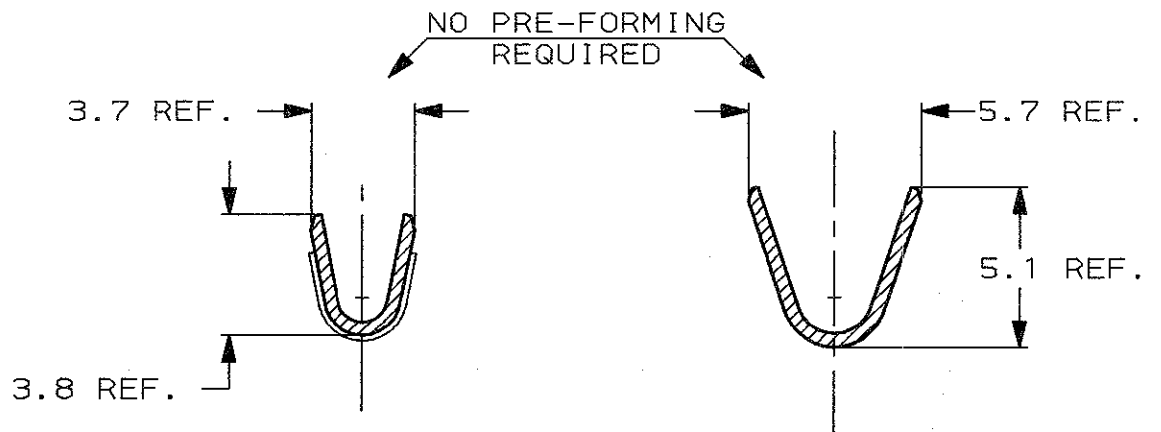
1) PER LE VERSIONI A NASTRO  
VEDERE DISEGNO 160739.  
(FOR STRIP FORM VERSION SEE DRAWING 160739).

2) OBSOLETE PARTS: OBSOLETE CIS STREAMLINING  
PER D.RENAUD/D.SINISI



SEZIONE A-A  
(SECTION A-A)

SEZIONE B-B  
(SECTION B-B)



2	OBSOLETE	PRE-STAGNATO (PRE-TIN PL.)	OTTONE (BRASS)	<del>160830-9</del>	C
	OBSOLETE	PRE-NICHELATO (PRE-NICKEL PL.)	ACCIAIO (STEEL)	<del>160830-6</del>	C
		STAGNATO (TIN PLATED)	BRONZO FOSF. (PH. BRONZE)	160830-4	C
	OBSOLETE	STAGNATO (TIN PLATED)	OTTONE (BRASS)	<del>160830-2</del>	C
		NUDO (UNPLATED)	OTTONE (BRASS)	160830-1	C
		FINITURA / COLORE (FINISH / COLOUR)	MATERIALE (MATERIAL)	NUMERO (TE P/N)	REV

CUSTOMER DWG. FOR REFERENCE ONLY		DISEGNO PER CLIENTE SOLO PER RIFERIMENTO	
THIS DRAWING IS UNPUBLISHED		RELEASE FOR PUBLICATION 19	
© COPYRIGHT 19 BY TE INCORPORATED, HARRISBURG, PA. ALL INTERNATIONAL RIGHT RESERVED. TE PRODUCTS MAY BE COVERED BY U.S. AND FOREIGN PATENT AND/OR PATENT PENDING			
TOLLERANZE: SE NON DIVERSAMENTE SPECIFICATO (TOLERANCES, UNLESS OTHERWISE SPECIFIED)		DIAM. ISOLANTE (INS. DIA. RANGE)	RANGO FILO (WIRE RANGE)
± 0.3		3.0-4.3	14-18 AWG
± 2°		SCALA (SCALE) 4:1	
C2 ECR-10-022530		ANGOLI (ANGLES)	
C1 REV PER ECO-09-022178		DIS. H. YAALI (DR.) 03 SEP 2001	
C NEW EMISSION ET00-0208-01		CONT. C. TARTARI (CHK)	
REVISIONI (REVISION RECORD)		APP. (CAPP.)	
DESCRIZIONE (DESCRIPTION)		FASTON® Connector, .250" sr. PIGGY-BACK REC. CONTACT. (LOOSE PIECE VERSION)	
LOC.	SIZE	NUMERO (DWG NO)	REV.
I	A3	C-160830	C2
FOGLIO (SHEET) 1 DI (OF) 1			

DISTRIBUZIONE  
(PRINT DIST.)