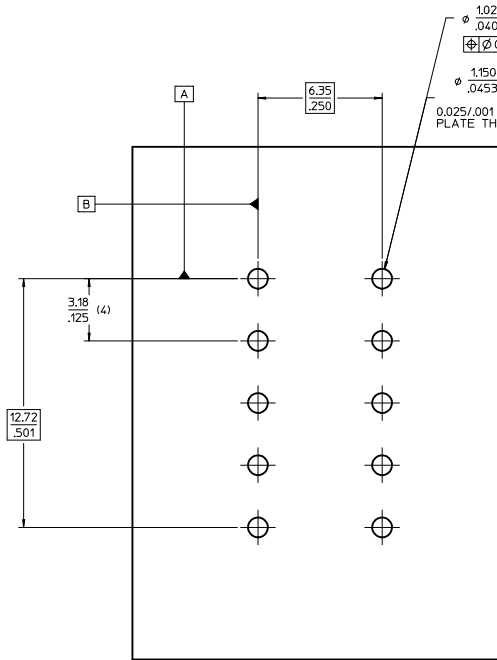
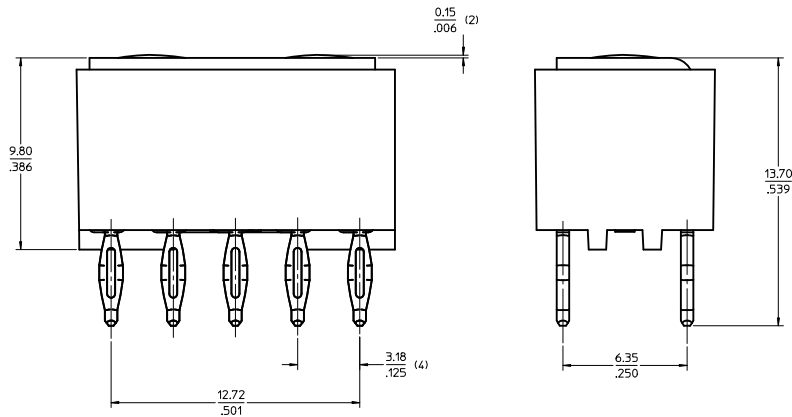
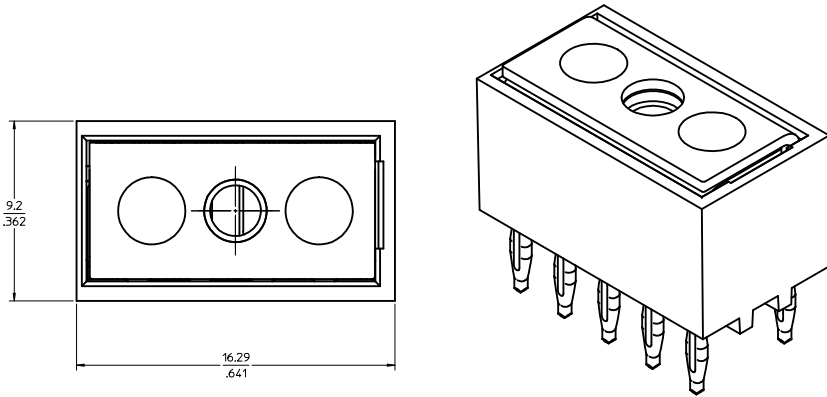


RECOMMENDED MOUNTING HARDWARE

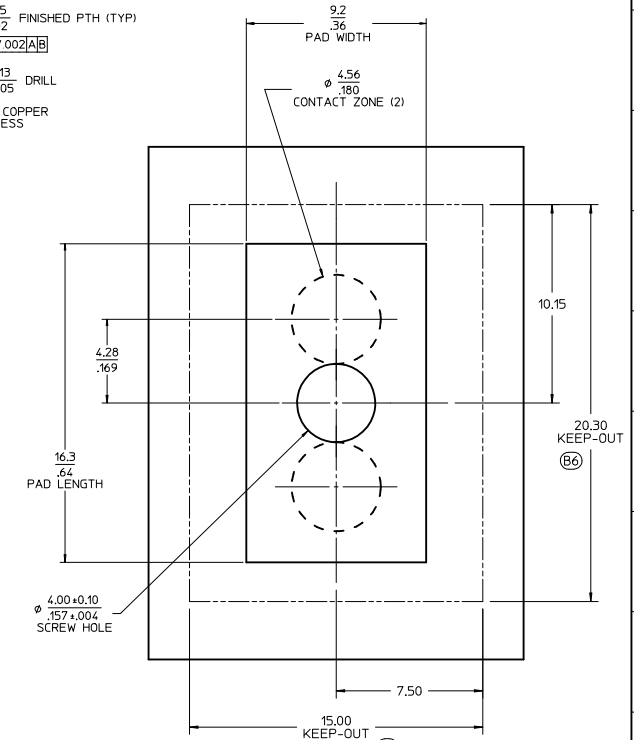
PCB THICKNESS	SCREW LENGTH	SCREW SIZE	FLAT WASHER SPEC.S (DIN 9021)	BELLEVILLE WASHER SPEC.S (DIN 6796)
0.063"	6.0mm	M3	MAT'L: STAINLESS STEEL WASHER OUTER DIA.: 9.0mm WASHER INNER DIA.: 3.2mm	MAT'L: STAINLESS STEEL WASHER OUTER DIA.: 7.0mm WASHER INNER DIA.: 3.2mm
0.093"	8.0mm	M3	WASHER THICKNESS: 0.7mm	WASHER THICKNESS: 0.6mm
0.125"	8.0mm	M3		

- NOTES:
1. MATERIAL: LCP, GLASS FILLED, BLACK, CONTACTS: COPPER ALLOY
 2. PLATING: SEE CHART
 3. PRODUCT SPECIFICATION: PS-76001-001.
 4. PACKAGING SPECIFICATION: PK-76001-901.
 5. TO REMOVE FROM PCB, SEE Z-POWER EXTRACTION TOOL INSTRUCTION SHEET ATS-621005300. USE EXTRACTION TOOL 621005300.

* SCREW MAT'L: STAINLESS STEEL
* RECOMMENDED TORQUE = .75Nm/6.6In-Lbs.



RECOMMENDED PCB FOOT PRINT LAYOUT
PCB THICKNESS 2.36/.093 MIN
PCB COMPLIANT TAIL INSERTION FORCE = 20LBS PER TAIL



RECOMMENDED PCB PAD LAYOUT

PART NUMBER	DESCRIPTION	PLATING
76001-0010	GOLD PLATED	SELECT GOLD: 30µ IN MIN SELECT MATTE TIN: 100µ IN MIN BOTH OVER NICKEL: 50µ IN MIN
76001-0110	TIN PLATED	MATTE TIN OVERALL: 100µ IN MIN NICKEL UNDERPLATE: 50µ IN MIN

ADD PCB KEEP-OUT DEC NO: UCP2011-1320 DRAWN BY: BHANDIRA CHKD: APATEL APPR: APATEL DATE: 2010/11/15 REV: B6	QUALITY SYMBOLS ∇=0 ∇=0 ∇=0	GENERAL TOLERANCES (UNLESS SPECIFIED) <table border="1"> <thead> <tr> <th></th> <th>mm</th> <th>INCH</th> </tr> </thead> <tbody> <tr> <td>4 PLACES</td> <td>±.05</td> <td>±.002</td> </tr> <tr> <td>3 PLACES</td> <td>±.05</td> <td>±.005</td> </tr> <tr> <td>2 PLACES</td> <td>±.13</td> <td>±.010</td> </tr> <tr> <td>1 PLACE</td> <td>±.25</td> <td>±.010</td> </tr> </tbody> </table> ANGULAR ±1/2°		mm	INCH	4 PLACES	±.05	±.002	3 PLACES	±.05	±.005	2 PLACES	±.13	±.010	1 PLACE	±.25	±.010	DIMENSION STYLE MM/IN	SCALE 8:1	DESIGN UNITS METRIC	THIRD ANGLE PROJECTION
		mm	INCH																		
	4 PLACES	±.05	±.002																		
	3 PLACES	±.05	±.005																		
2 PLACES	±.13	±.010																			
1 PLACE	±.25	±.010																			
DRAWN BY: DMCGOWAN DATE: 2005/11/07		CHECKED BY: MSANDBERG DATE: 2006/02/04		APPROVED BY: APATEL DATE: 2010/11/15		TITLE Z-POWER 10 TAIL ASSEMBLY															
MATERIAL NO. SEE CHART		DOCUMENT NO. SD-76001-001		MOLEX INCORPORATED																	
DRAFT WHERE APPLICABLE MUST REMAIN WITHIN DIMENSIONS						SHEET NO. 1 OF 1															