

71475

NOTES:

1) MATERIALS:

HOUSING: GLASS FILLED LCP (LIQUID CRYSTAL POLYMER),  
UL 94V-0, COLOR: BLACK.  
MOLDED STICK: GLASS FILLED LCP (LIQUID CRYSTAL POLYMER),  
UL 94V-0, COLOR: BLACK.  
MALE TERMINAL: PHOSPHOR BRONZE  
OUTER SHELL: DEEP DRAWN STEEL.

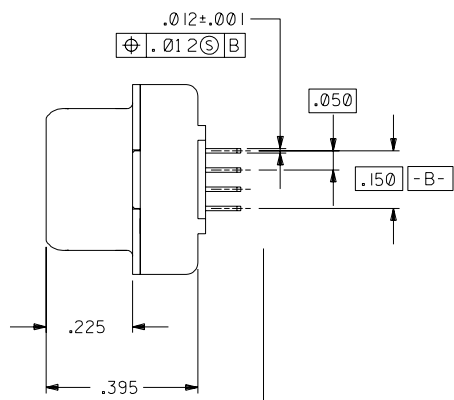
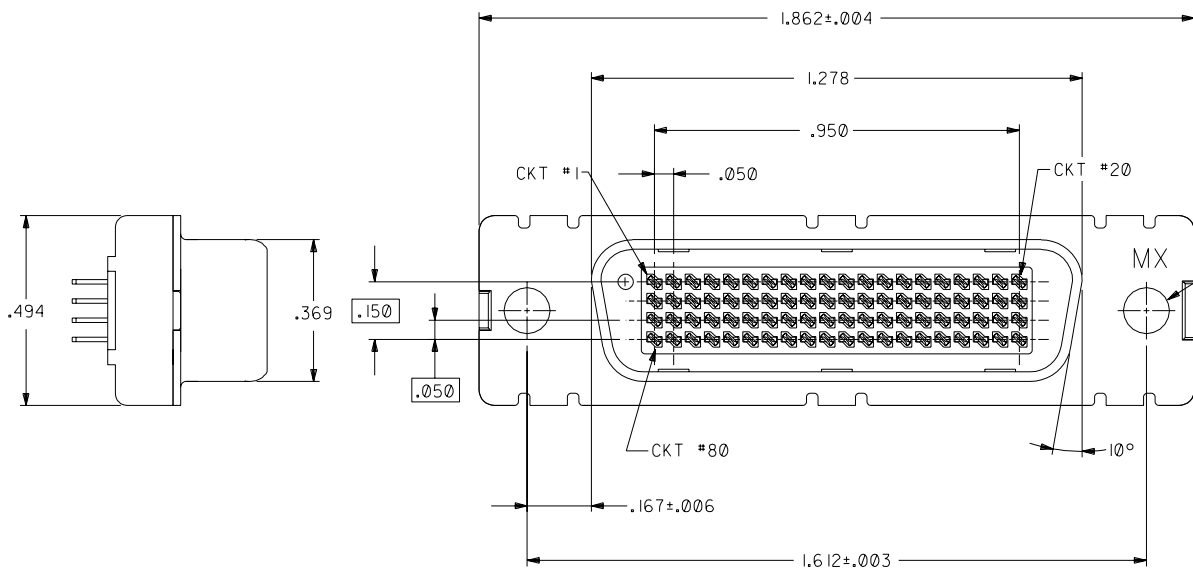
2) PLATING :

TERMINAL: .000030/(0.000762) MINIMUM GOLD IN SELECTIVE AREA;  
.000100/(0.00254) MINIMUM TIN IN SELECTIVE AREA;  
OVER NICKEL UNDERPLATE OVERALL.

OUTER SHELL: .000100/(0.00254) MINIMUM BRIGHT NICKEL  
OVER COPPER FLASH (OPTIONAL).

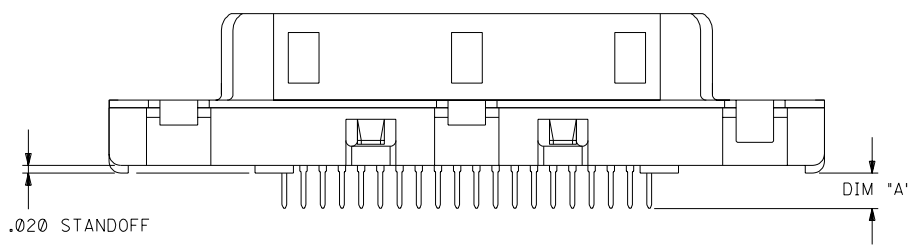
3) CONFORMS TO PRODUCT SPECIFICATION PS-70928.

4) PARTS TO BE PACKAGED PER PK-70873-0604.



ITEM NUMBER	DIM "A" (TAIL LENGTH)
71475-1000	.092±.007
71475-1001	.062±.007

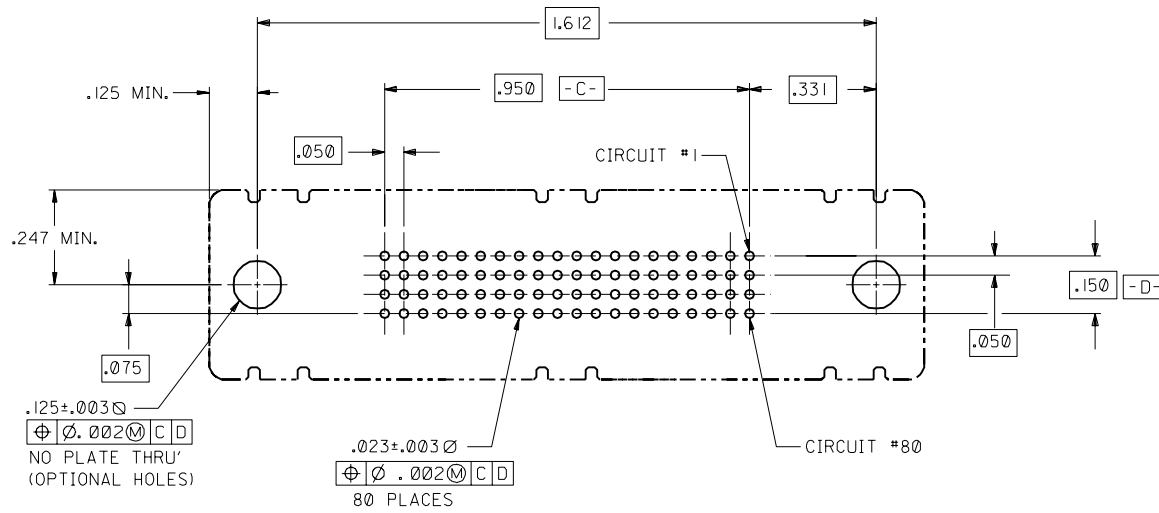
NOTE FOR LEAD FREE CONVERSION:  
THE PRIMARY SHIPPING CARTON WILL BE  
LABELED "COMPLIANT TO ROHS DIRECTIVE  
2002/95/EC AND ELV ANNEX II OF  
DIRECTIVE 2000/53/EC". CARTONS  
WITHOUT THIS LABEL MAY CONTAIN  
PRODUCT WITH LEAD.



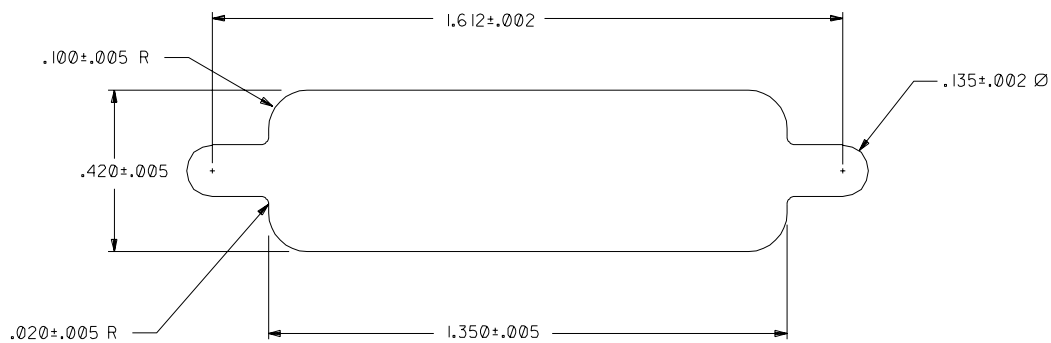
REV	DATE	DESCRIPTION
E	04/04/15	LEADFREE ECN* UCP2004-1998 DMORGAN
D	05/08/96	MODIFIED PER ECN U6-1399 DRS
C	02/13/96	ADDED -1001 PER ECN U6-0957 DRS
B	12/01/95	REVISED PER ECN U6-0641 DRS
A	05/05/95	FIRST RELEASE PER ECN U5-1116 MOS

DIMENSIONS SHOWN (METRIC) INCH		UNLESS OTHERWISE SPECIFIED TOLERANCES: ANGULAR ± 1/2°	
3 PLACE	± .010	INCH	METRIC
2 PLACE	±	---	---
1 PLACE	---	---	---
DRAWING WHERE APPLICABLE MUST REMAIN WITHIN DIMENSIONS			
DRWG. BY: MOS	CHK'D. BY: GWF	FILE NAME: 571475X1.DGN	DATE: 03/23/95
APP'D. BY: GWF	SCALE: 4:1	THIS DRAWING CONTAINS INFORMATION THAT IS PROPRIETARY TO MOLEX INC. AND SHOULD NOT BE USED WITHOUT WRITTEN PERMISSION.	

TITLE	.050"x.050" 80ckt LFH Vertical Plug I/O FOR .062" THK. PCB		
PART NO.	MOLEX INCORPORATED	SHEET NO.	1 OF 2
DRWG. NO.	SDA-71475-100*	DATE	03/23/95



RECOMMENDED P.C.B. LAYOUT  
COMPONENT SIDE



RECOMMENDED PANEL CUT-OUT

NOTE: MAX. PANEL THICKNESS: .040"

B	SEE SHEET I
A	SEE SHEET I

MFG. SH.	REV.	LTR.	REVISIONS
----------	------	------	-----------

DIMENSIONS SHOWN (METRIC) INCH		UNLESS OTHERWISE SPECIFIED TOLERANCES ANGULAR ± 1/2°	
3 PLACE ±	.010	---	---
2 PLACE ±	---	±	---
1 PLACE	---	±	---
DRAFT WHERE APPLICABLE MUST REMAIN WITHIN DIMENSIONS			
DRWG. BY: MOS	CHK'D. BY: GWF	FILE NAME: S71475-2 DGN	SCALE: 4: 1
PART NO. SEE SHEET I		DRWG. NO. SDA-71475-100	
TITLE: .050"x.050" @ 80ckt LFH Vertical Plug I/O FOR .062" THK PCB		SHEET NO. 2 DATE 03/23/95	
MOLEX INCORPORATED U.S.A.		L15LEJLL 60532	
THIS DRAWING CONTAINS INFORMATION THAT IS PROPRIETARY TO MOLEX INC. AND SHOULD NOT BE USED WITHOUT WRITTEN PERMISSION			

71475