

4

3

2

1

THIS DRAWING IS UNPUBLISHED.

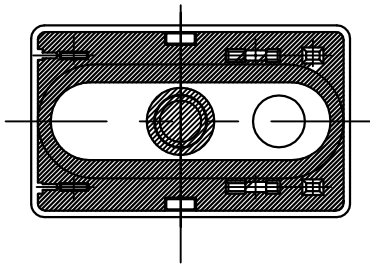
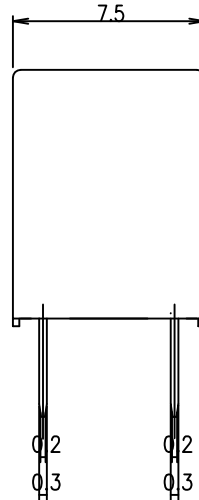
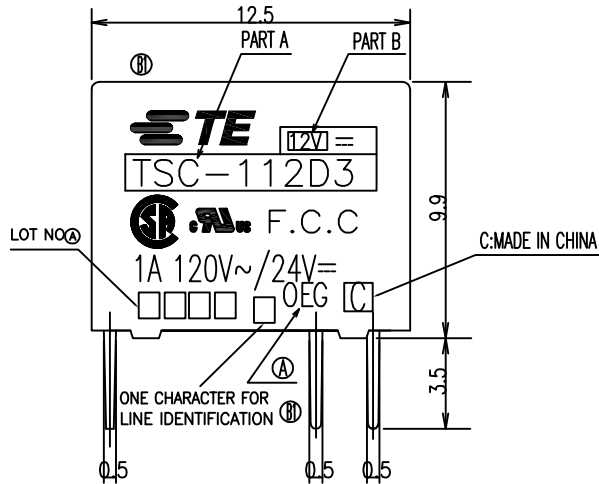
RELEASED FOR PUBLICATION

-. - .

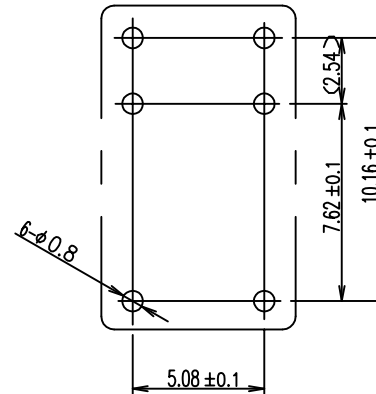
© COPYRIGHT - By TE CONNECTIVITY

ALL RIGHTS RESERVED.

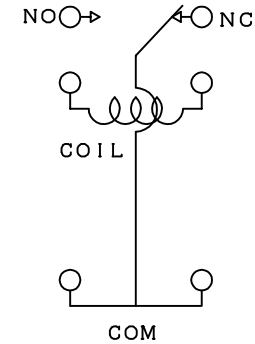
| LOC | DIST | REVISIONS | | | |
|-----|------|--|---------------|-----------|-----------|
| P | LTR | DESCRIPTION | DATE | DWN | APVD |
| HB | - | 1.CHANGE TE LOGO 2.ADD LINE IDENTIFICATION 3.PN OBSOLETE 4.TERMINALS TOLERANCE CLARIFICATION | ECO-11-018616 | 04-MAY-12 | P.L B.H.Y |



DRILLING DIAGRAM (BOTTOM VIEW)



CONNECTION DIAGRAM (BOTTOM VIEW)



GENERAL TOLERANCE

| DIAGRAM DIMENSION | TOLERANCE |
|-------------------|-----------|
| 0.99mm max. | ±0.1mm |
| 1 - 2.99mm | ±0.2mm |
| 3mm min. | ±0.3mm |

| | | | | | |
|--|--|---|--|--------------------|--------|
| THIS DRAWING IS A CONTROLLED DOCUMENT. | | DWN N.FUNAYAMA | | | |
| DIMENSIONS: mm | | CHK H.SASAKI | | | |
| | | TOLERANCES UNLESS OTHERWISE SPECIFIED: | | NAME | |
| | | 0 PLC ± - 1 PLC ± - 2 PLC ± - 3 PLC ± - 4 PLC ± - ANGLES ± - | | APVD A.NAGAI | |
| MATERIAL | | FINISH | | PRODUCT SPEC | |
| - | | - | | APPLICATION SPEC | |
| - | | - | | WEIGHT | |
| - | | - | | A3 00779 C=1461184 | |
| CUSTOMER DRAWING | | | | SCALE | 5:1 |
| | | | | SHEET | 1 OF 2 |
| | | | | REV | B1 |

THIS DRAWING IS UNPUBLISHED.

RELEASED FOR PUBLICATION

-. - .

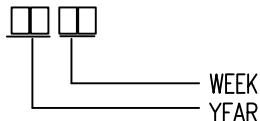
© COPYRIGHT - By TE CONNECTIVITY

ALL RIGHTS RESERVED.

| | | | | | | | |
|-----|------|-----------|-----|-------------|------|-----|------|
| LOC | DIST | REVISIONS | | | | | |
| HB | - | P | LTR | DESCRIPTION | DATE | DWN | APVD |
| | | - | | SEE SHEET 1 | - | - | - |

(A) NOTES:

1.LOT NO. SYSTEM AS FOLLOWING:



- (B1) 2.TERMINAL DIMENSIONS BEFORE SOLDER DIP
- (B1) 3.FOR THE TIN-PLATING OF THE PINS:
+0.1mm FOR WIDTH, THICKNESS AND DIAMETER
+0.5mm FOR LENGTH

(B1)

| | | | | | |
|-----|-------------|-----------|--------|-----------------|----------|
| n | 2-1419130-6 | TSC-124D3 | 24V | 108-79496 | OBSOLETE |
| m | 1461184-6 | TSC-118D3 | 18V | 108-79495 | OBSOLETE |
| l | 2-1419130-0 | TSC-112D3 | 12V | 108-79494 | OBSOLETE |
| k | 1461184-5 | TSC-109D3 | 9V | 108-79493 | OBSOLETE |
| j | 1461184-4 | TSC-106D3 | 6V | 108-79492 | OBSOLETE |
| i | 1419130-9 | TSC-105D3 | 5V | 108-79491 | OBSOLETE |
| h | 1461184-3 | TSC-103D3 | 3V | 108-79490 | OBSOLETE |
| g | 2-1419130-7 | TSC-124L3 | 24V | 108-79489 | ACTIVE |
| f | 1461184-2 | TSC-118L3 | 18V | 108-79488 | OBSOLETE |
| e | 2-1419130-3 | TSC-112L3 | 12V | 108-79487 | OBSOLETE |
| d | 1-1419130-7 | TSC-109L3 | 9V | 108-79486 | OBSOLETE |
| c | 1461184-1 | TSC-106L3 | 6V | 108-79485 | OBSOLETE |
| b | 1-1419130-1 | TSC-105L3 | 5V | 108-79484 | OBSOLETE |
| a | 2-1440003-0 | TSC-103L3 | 3V | 108-79483 | OBSOLETE |
| No. | TE PART NO | PART A | PART B | PRODUCT SPRC NO | STATUS |

RELAY TYPE

| | | | | | |
|-------|------------|-------------|----------------------|---------------|----|
| | | EPOXY RESIN | SEAL (CASE&BASE) MIX | 14 | |
| | | SOLDER DIP | Cu ALLOY | COIL TERMINAL | 13 |
| 94V-0 | | PBT | BOBBIN | 12 | |
| | | UEW | MAGNETIC WIRE | 11 | |
| 94V-0 | | PBT | CASE | 10 | |
| | Ni P | STEEL | YOKE | 9 | |
| | Ni P | STEEL | ARMATURE | 8 | |
| | Ni P | STEEL | CORE | 7 | |
| | SOLDER DIP | Cu ALLOY | MOVABLE SPRING | 6 | |
| | SOLDER DIP | Cu ALLOY | B TERMINAL | 5 | |
| | SOLDER DIP | Cu ALLOY | M TERMINAL | 4 | |
| | GS CLAD | Aq ALLOY | MOVABLE CONTACT | 3 | |
| | GS CLAD | Aq ALLOY | B CONTACT | 2 | |
| | GS CLAD | Aq ALLOY | M CONTACT | 1 | |
| UL-94 | FINISH | MATERIAL | DESCRIPTION | ITEM | |

THIS DRAWING IS A CONTROLLED DOCUMENT.

DWN N.FUNAYAMA
CHK H.SASAKI
APVD A.NAGAI

TE Connectivity

TSC STANDARD TYPE

SIZE A3 CAGE CODE 00779 C=1461184 DRAWING NO
RESTRICTED TO

MATERIAL FINISH WEIGHT APPLICATION SPEC

CUSTOMER DRAWING SCALE 5:1 SHEET 2 OF 2 REV B1

