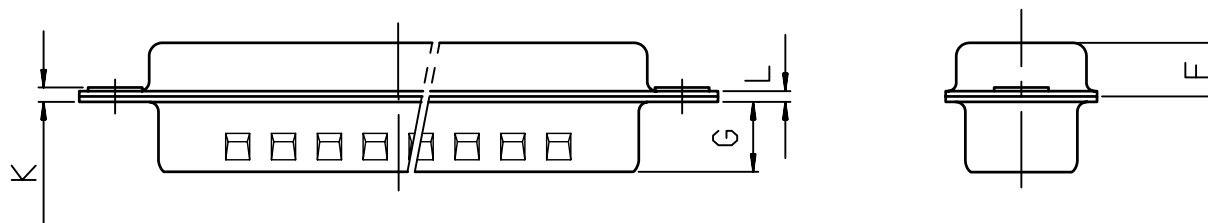
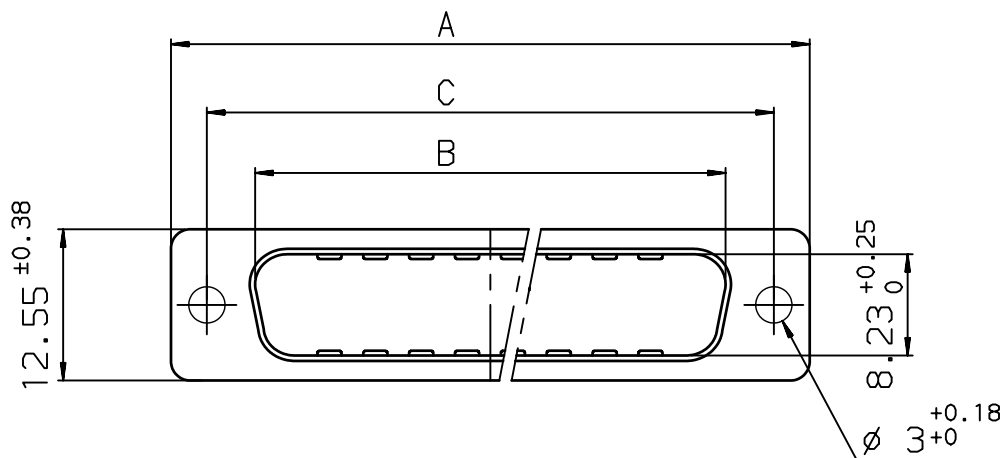


NOTE
Sealed caps IP 65 .



Shell size	Number of contacts	A ^{+0.76} ₀	B ^{+0.25} ₀	C ±0.12	F ^{+0.13} _{-0.03}	G	K	L ^{+0.22} ₀	Part number
E	09	30.43	16.79	24.99	4.36	5.90 ^{+0.15} ₀	1.00 ^{+0.30} ₀	0.80	86553138TLF
A	15	38.76	25.12	33.32	4.36	5.90 ^{+0.15} ₀	1.00 ^{+0.30} ₀	0.80	86553139TLF
B	25	52.65	38.84	47.04	4.36	5.70 ^{+0.25} ₀	1.00 ^{+0.30} ₀	0.80	86553140TLF
C	37	68.94	55.30	63.50	4.36	5.70 ^{+0.25} ₀	1.27 ^{+0.30} ₀	1.00	86553141TLF

European Views

NOTE: RoHS INFORMATIONS

- The "LF" product meets European union Directives and other country regulations as described in 65-22-008.
- The product is not intended to be exposed to a manufacturing solder process.
- Plating: Sn pure bright over Copper.
- Packaging spec: see 65-14-920.

www.fciconnect.com		surface ISO 1302 ✓	tolerance std ISO 406 ISO 1101	projection 	mm
TOLERANCES UNLESS OTHERWISE SPECIFIED					
ANGULAR	LINEAR	0.X	±0.1	size A3	Scale 3
0.XX	±2'	0.XX	±0.1	ECN	LS09-0006
0.XXX		0.XXX	±0.1	Product family	D-SUB
Dr GOISNARD 2006/01/12				Spec ref -	
Eng PESSION 2006/01/12					
Chr LEGARE 2006/01/12					
Appr LEGARE 2006/01/12					
		PINS METAL CAPS D SUB ACCESSORIES		dwg no C01-8655-1632	Rev. C
catalog no		-		CUSTOMER	sheet 1 of 1

rev	ecn no	dr	date
A	LS05-0123	L60	2006/01/12
B	LS06-0095	L60	2006/06/23
C	LS09-0006	PCR	2009/01/08
-	-	-	-
-	-	-	-
-	-	-	-
-	-	-	-